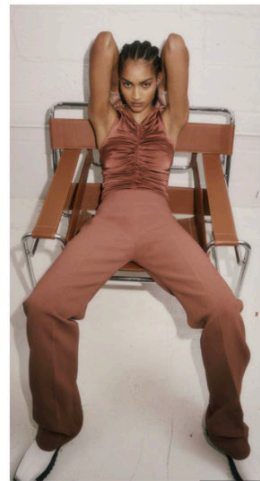
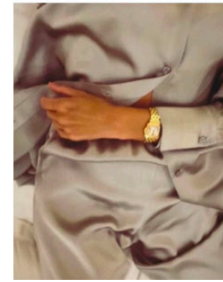
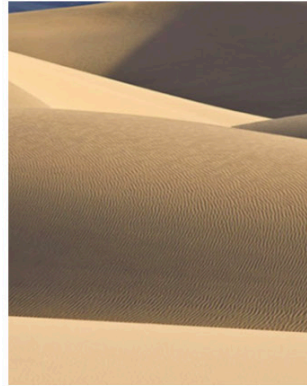


ANINE BING

SUMMER 2023

ANINE BING

SUMMER 2023



ANINE BING

THE SUMMER COLLECTION

The Summer Collection presents a dynamic assortment deeply rooted in Scandinavian and American heritage with an enhanced focus on environmentally conscious fabrications.

Subdued earth tones and soft washes of color paint a picture of the blooming countryside, while bright shades of white pay tribute to the crisp, clean air synonymous with high summer in Scandinavia. Inspired by Denmark's national flower, the marguerite daisy, a high-impact floral print decorates a selection of warm-weather staples, further grounding the Summer Collection in meaningful touches of Scandinavian influence.

A rugged-yet-refined selection of rock 'n' roll graphics, distressed denim, and appliqué details pay tribute to the vast, desert landscape of the west, infusing the stylistic simplicity of traditional Scandinavian design with a bold, American energy.



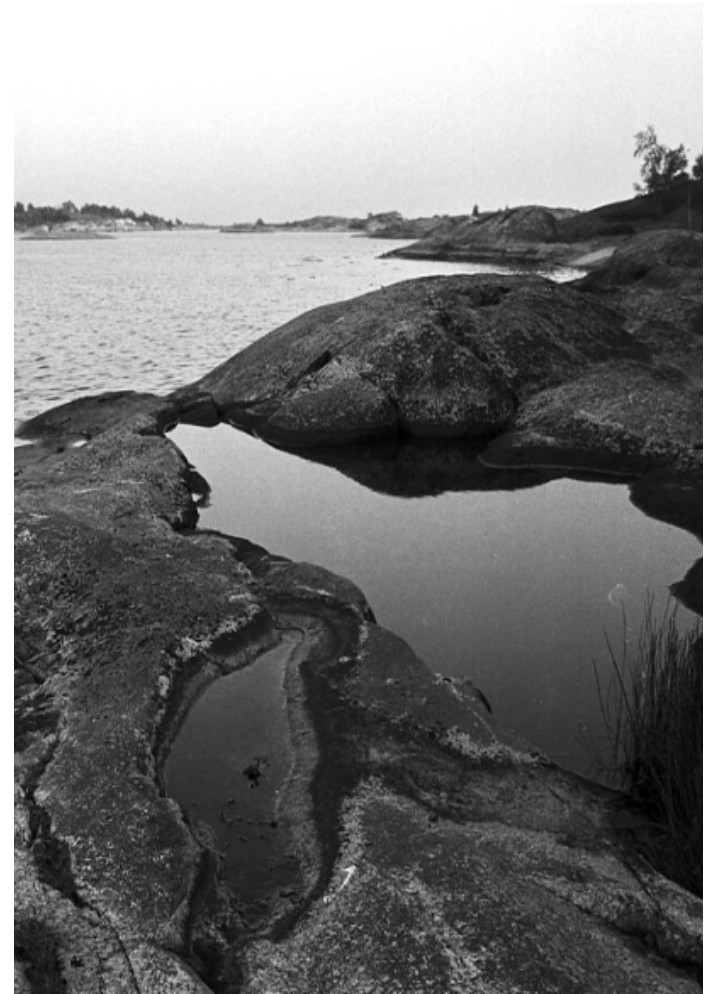
ANINE BING

SUMMER IN SCANDINAVIA

Reminiscent of long, slow summers in the Stockholm archipelago, the collection presents fluid silhouettes with wistful details.

Stripe detailing throughout the collection pays homage to nautical themes, as seen in the Mika Shirt and Sloan Shirt, along with statement-making seasonal updates to the best-selling Rio Tote and Rio Pouch.

Further grounding the assortment in maritime influence, the new Gaia Bag debuts with knotted-cord detailing for a luxurious take on an essential beachside accessory.



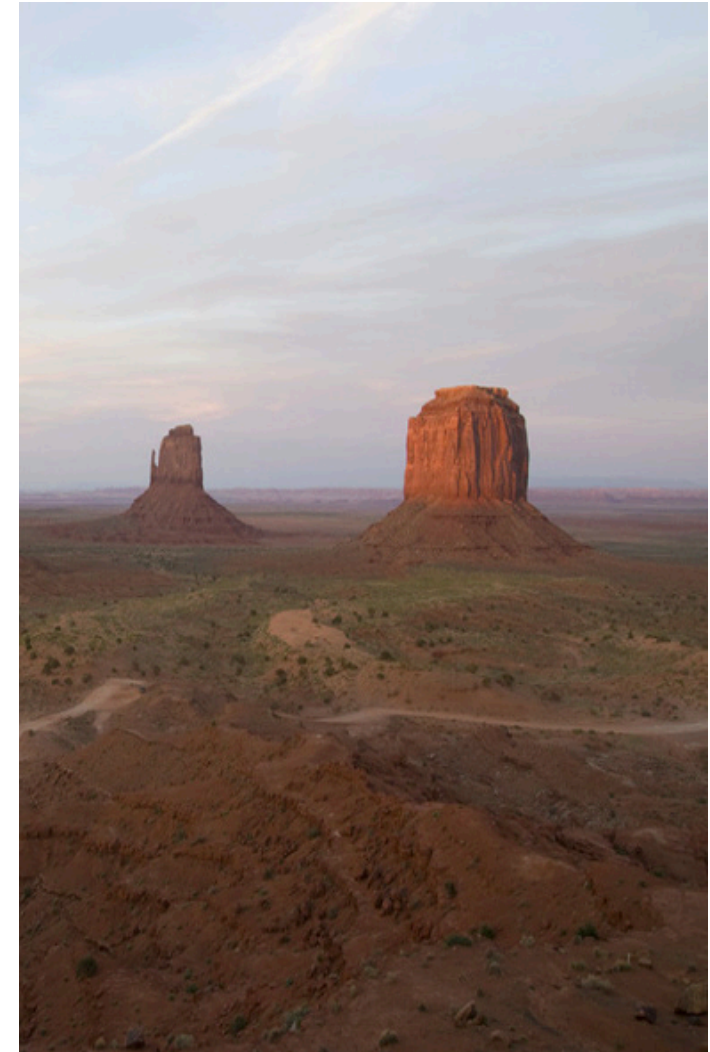
ANINE BING

THE AMERICAN WEST

Inspired by the vast, desert landscape of the American West, a dusty shade of terracotta, offset by warm neutrals, elevates minimalist silhouettes including the relaxed, silk Row Shirt and drapey Chloe Slip Dress.

Decorating select styles, an abstract flower is depicted in a muted two-toned print to symbolize central themes of resilience and strength within the collection.

Signature rock 'n' roll subtleties and western-inspired details adorn an assortment of summer footwear and accessories, including the suede Tania Mules with appliqu  and the Waylon Belt featuring ornate metal hardware.



ANINE BING

SOFT STRUCTURE

Traditionally structured pieces like tailored suiting and leather handbags undergo seasonal updates in soft, supple materials and natural fibers, resulting in an effortless wardrobe destined for high-summer styling.

The tailored Kaia Blazer and coordinating Jay Trousers in breezy, yellow linen bring subtle texture into the assortment. The new Grace Bag, available in two practical sizes, comes crafted in smooth, slouchy leather for a relaxed and uncomplicated presentation.



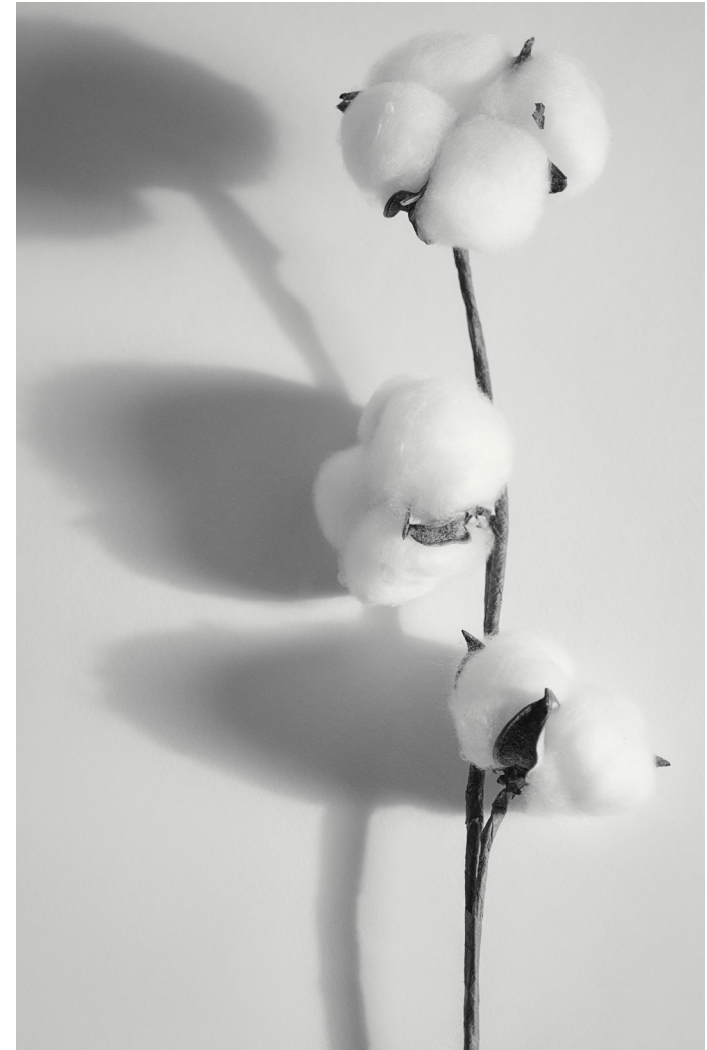
ANINE BING

SUSTAINABILITY

Driven by our social responsibility to embrace a more sustainable path, the Summer Collection debuts designs crafted in natural, high-quality fibers including organic cotton, linen, and silk.

The conscious assortment includes seasonal updates to signature graphic tees and sweatshirts made from Global Organic Textile Standard (GOTS) Certified Cotton. The polyester used in select ANINE BING Sport styles has been recycled by transforming plastic bottles into post-consumer yarn to yield a more sustainable and durable construction. Signature denim styles including the oversized Gio Jean and matching Jake Jacket continue to utilize certified organic cotton with a confirmed low environmental-impact score, while a seasonal update to the best-selling Gavin Jean features materials certified by the Better Cotton Initiative, a global non-profit organization that promotes sustainable cotton production.

Our Resort 2022 capsule, an extension of the Summer Collection, introduces new pieces including swimwear separates cut from a recycled nylon-spandex blend.





SIOAN SHIRT A-07-3785-124
ROY JEAN A-06-1113-124
TANIA MULES A-14-1180-000



SIOAN SHIRT A-07-3785-124
ROY JEAN A-06-1113-124
BROOKE BAG A-13-1911-120
TANIA MULES A-14-1180-000





MOSS DRESS A-02-3224-000
MID RYDER BOOTS A-14-1135-000

BRUNI SHIRT A-07-9047-100
TWIST ROPE NECKLACE A-15-0500-920A





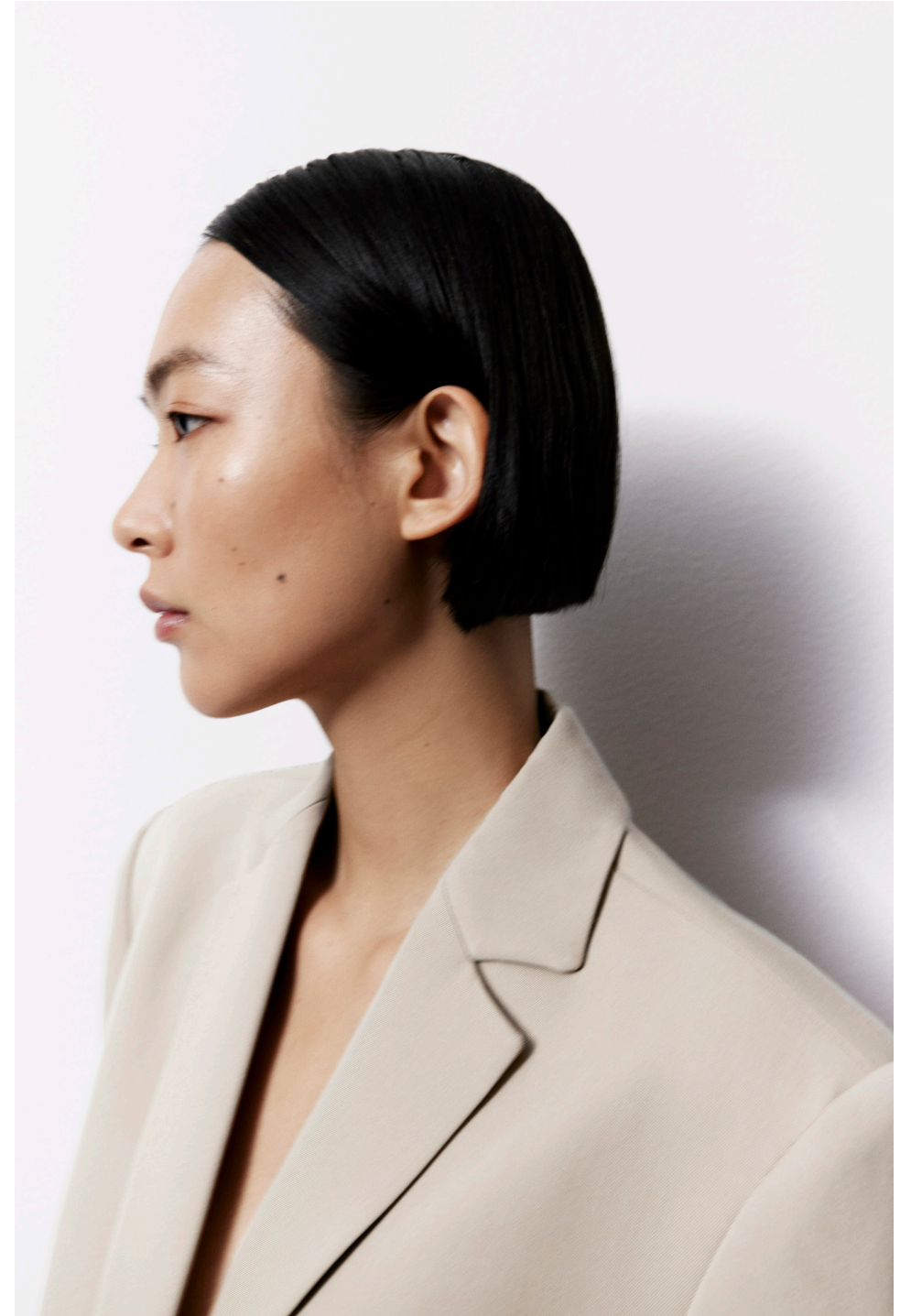
BRUNI SHIRT A-07-9047-100
CARRIE PANT A-03-3269-100
LARGE RIO TOTE A-13-2158-024
INVISIBLE FLAT SANDALS A-14-2177-000



QUINN BLAZER A -01-7073-139
CARRIE PANT A-03-3269-100
GAIA BAG A-13-1412-000
BRODY SNEAKERS A-14-3180-100A



QUINN BLAZER A -01-7073-139
CARRIE PANT A-03-3269-100
BRODY SNEAKERS A-14-3180-100A



KAIA BLAZER A-01-2018-190
TWIST ROPE HOOP EARRINGS A-15-3500-920A





KAIA BLAZER A-01-2018-190
JAY TROUSER A-03-3307-190A
INVISIBLE FLAT SANDALS A-14-2177-000



JAKE JACKET A-01-7154-340
CARRIE PANT A-03-3269-000B
MINI GRACE BAG A-13-2210-000



CHLOE DRESS A-02-1139-340
MINI GRACE BAG A-13-2210-000





KEIRAN TOP A-07-2791-042
CARRIE PANT A-03-3269-000B
GRACE BAG A-13-2211-000
SKYLER SANDALS A-14-9102-000A



ROW SHIRT A-07-2801-651
CARRIE PANT A-03-3269-650
BROOKE BAG A-13-1911-120
TANIA MULES A-14-1180-000



ROW SHIRT A-07-2801-651
CARRIE PANT A-03-3269-650
BROOKE BAG A-13-1911-120
TANIA MULES A-14-1180-000



- 1. SLOAN SHIRT, ROY JEAN, BROOKE BAG, TANIA MULES
- 2. BO TEE, CARRIE PANT, BROOKE BAG, RAE SLINGBACK HEELS
- 3. RYLAN TEE, CARRIE PANT, MINI GRACE BAG, RAE SLINGBACK HEELS
- 4. KAIA BLAZER, CARRIE SHORT, GRACE BAG, RAE SLINGBACK HEELS
- 5. MILO TEE BLACK EAGLE, ROY JEAN, RAE SLINGBACK HEELS
- 6. SLOAN SHIRT, CARRIE PANT, MINI GRACE BAG, RAE SLINGBACK HEELS



7. MIKA SHIRT, LEYA SHORT, BROOKE BAG, WAYLON BELT, RAE SLINGBACK HEELS
8. ROWAN DRESS, MINI GRACE BAG, INVISIBLE SANDALS
9. BRUNI SHIRT, CARRIE PANT, LARGE RIO TOTE, INVISIBLE FLAT SANDALS
10. CAITLYN TOP, JOLIN SKIRT, RAE SLINGBACK HEELS
11. WES TEE PAINTED MUSE, OLSEN JEAN, GRACE BAG, RAE SLINGBACK HEELS
12. MEGAN DRESS, MINI GRACE BAG, RAE SLINGBACK HEELS



13. LANIE DRESS, MINI GRACE BAG, RAE SLINGBACK HEELS
14. ALEXIS SWEATER, CARRIE PANT, MINI GRACE BAG, RAE SLINGBACK HEELS
15. MIKA SHIRT, CARRIE PANT, INVISIBLE FLAT SANDALS
16. KAIA BLAZER, JAY TROUSER, INVISIBLE FLAT SANDALS
17. DRAY VEST, CARRIE PANT, MINI GRACE BAG, RAE SLINGBACK HEELS
18. EVA TANK, NATALIA SKIRT, BROOKE BAG, INVISIBLE SANDALS



19.
LIV DRESS, GAIA BAG, KIVA SANDALS



20.
ROW SHIRT, OWEN PANT MINI GRACE BAG,
RAE SLINGBACK HEELS



21.
ZAHRA ONE PIECE, CARRIE PANT, SMALL RIO TOTE,
INVISIBLE FLAT SANDALS



- 22. KEIRAN DRESS, KAIA BLAZER, RAE SLINGBACK HEELS
- 23. HAMILTON SHIRT, CARRIE SHORT, KIVA SANDALS
- 24. KEIRAN TOP, CARRIE PANT, GRACE BAG, SKYLER SANDALS
- 25. ATLAS SWEATER, CARRIE PANT, GRACE BAG, RAE SLINGBACK HEELS
- 26. JAKE JACKET, EVA TANK, CARRIE PANT, MINI GRACE BAG, RAE SLINGBACK HEELS
- 27. CHLOE DRESS, MINI GRACE BAG, RAE SLINGBACK HEELS



28.
TYLER SWEATSHIRT, BLAKE BIKER SHORT, GAIA BAG,
BRODY SNEAKERS



29.
CALLEN VEST, OLSEN JEAN, MINI COLETTE BAG,
RAE SLINGBACK HEELS



30.
EMBER JACKET, REID PANT, BRODY SNEAKERS



31. SAVANNAH DRESS, RIO POUCH, INVISIBLE FLAT SANDALS
32. QUINN BLAZER, CARRIE PANT, GAIA BAG
33. AMELL TANK, KAIA BLAZER, GAVIN SHORT, RAE SLINGBACK HEELS
34. MOSS DRESS, MID RYDER BOOTS
35. JACI SWEATSHIRT UNIVERSITY PARIS, GRACE BAG, BRODY SNEAKERS
36. CAMI BUCKET HAT, CAITLYN TOP, BILLIE PANT, GRACE BAG, RAE SLINGBACK HEELS



37.

ROW SHIRT, CARRIE PANT, BROOKE BAG,
RAE SLINGBACK HEELS



38.

MIKA SHIRT, CARRIE PANT, INVISIBLE FLAT SANDALS



39.

CAITLYN TOP, CARRIE PANT, MINI GRACE BAG,
INVISIBLE FLAT SANDALS



WWW.ANINEBING.COM